



Breadcrumb

1. [Home](#)

Entity Print

Membership breakdown 2021

The members belong to a unique collaborative network of peers involved in haematopoietic stem cell transplantation and cellular therapy research. They all have a common goal, and that is to enhance the quality of life of patients with life-threatening blood cancers and diseases.

Our members are listed according to their role within their team. They are comprised of the following distribution of roles.

Physicians



3183

Nurses



930

Data Managers



671

Laboratory technicians



235

Quality Managers



304

Pharmacists



78

Transplant Coordinators



49

Students



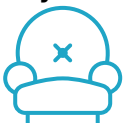
5

Statisticians



3

Psychologists/Psychiatrists



5

Scientists



39

Patient Advocates



3

Other



37

Total members in 2021: 5542

Membership types 2021

Our members can be classified as centre members (full or associate); individual or provisional members.

Full members commit to submitting data on all patients treated in their centre. 35 centres and 44 individual members joined the EBMT in 2021.

FULL centres reporting



534

ASSOCIATE centres



51

INDIVIDUAL members



163

PROVISIONAL members (including centres and individuals)

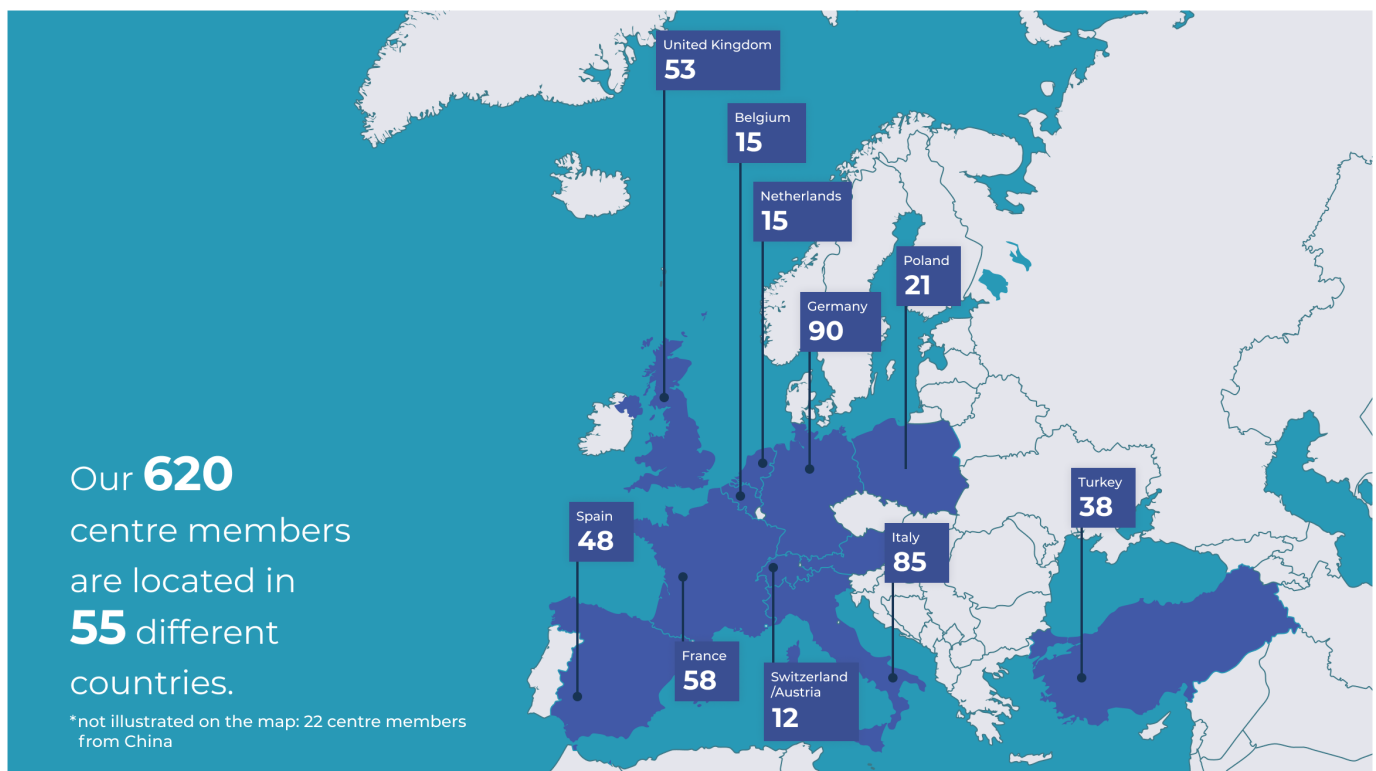


79

New members pending approval at the General Assembly Meeting during the upcoming EBMT Annual Meeting

Total centres in 2021: 620

Top 10 countries in terms of number of centres participating in the EBMT



Become a Member

Centres or independent persons that are active in the field of transplantation & cellular therapy related to any kind of haematopoietic stem cell, or any other organisation involved in the care of donors and recipients of HSCT, can become a member of the EBMT. Members' rights, obligations, and fees are dependent upon the category of membership to which they pertain. Visit our website to get more details about each of the categories.

[Learn more](#)

