



# ProMISe

Issue - 17

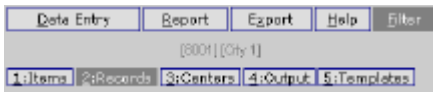
June 2006

## Updates to ProMISe on 26th June

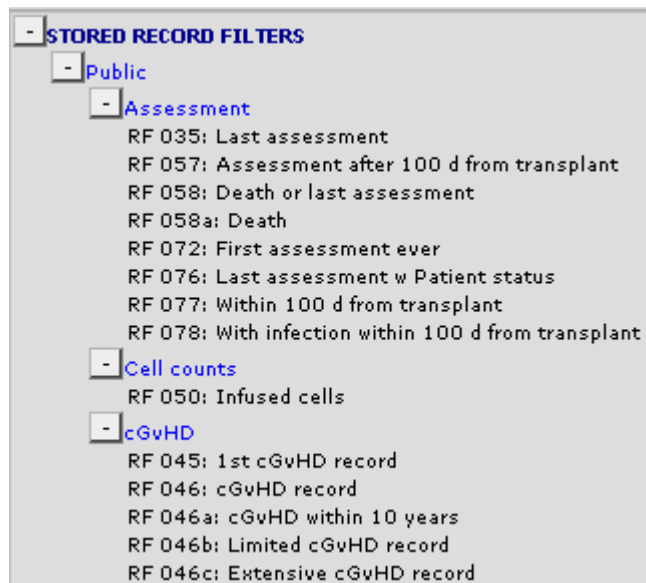
On Monday morning the current beta version of ProMISe will go into production. This includes some improvements and the correction of some minor bugs.

Data Entry users may not notice any changes to the screens, as the changes are very minor.

Data Retrieval users may notice some changes to the layout of the Filter – Records screen. (Stored Report specifications may also be changed to this new format.) The stored record filters in the public designer folder have been grouped into categories to make it easier to search for an existing record filter.



Following the update, the stored record filter folders will appear like this, grouped alphabetically by filter types such as cGvHD, Transplant or Year:

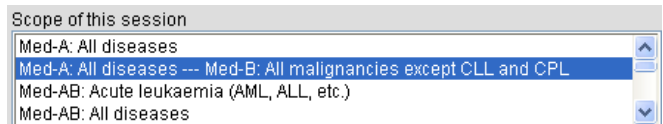


Filters that cannot be grouped in one specific area, for example “Allografts since 1995 with CMV infection” can be found in a folder named [Complex].

If you have any queries about the new layout please contact the [Helpdesk](#)

## Change to Logon page

The scope of the session is now listed alphabetically. The session [MED-A all diseases and MED-B all malignancies except CLL] remains as the default highlighted:



For further information on Reduced Sessions please see the previous newsletter:

<http://www.ebmt.org/4Registry/registry4.html#newspromise>

## Documentation

<http://www.ebmt.org/4Registry/registry3.html>:

**MED-AB manual:** The guide to completing MED-AB data was updated in March for the EBMT 2006 meeting. Another update will be posted shortly with the MED-A items highlighted for MED-A only users

**New MED-B form:** Inherited Disorders now available

<http://www.ebmt.org/4Registry/registry4.html#manual>:

**ProMISe User Guide:** updated in March 2006. Future updates to follow shortly

**Description of Pre-programmed report queries:**

A summary of all standard/advanced queries that are available for general use by centres and registries, with guidance on how they can be edited for your own use.

## Checking your Data

The following pre-programmed reports are ready to load & generate in Report – Specify for you to check your own centre data:

- StdC Check 002: Diagnosis labelled as -other-
- StdD Check 005: Main disease x subclassification
- StdD Check 011: Autoimmune disease x subclassification
- Adv Check 003: More than 1 date diagnosis for same diagnosis
- Adv Check 004: Double date of death or alive after death