



# ProMISe

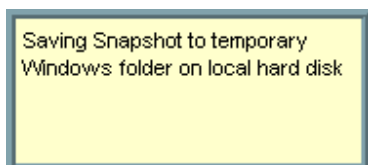
Issue 15

August 2005

## Data Entry Snapshots

We are pleased to announce that the snapshot facility has been implemented in Promise 2. Users of the former Promise version will be familiar with this “back-up” saving procedure.

This feature gives users the option of saving data on the current patient at any point during data entry. By pressing your [F12] key while in the data editor, you can store a snapshot of the current form (saved data/pending modifications).



NB: this is intended as a back-up procedure, in case of server interruptions. The data in a snapshot will not be stored on our central server, only your local computer. This feature uses Active X and will only be available to users who have enabled Active X during logon.

You can restore the data by pressing [Alt-F12]. The data will appear as “pending modifications” which you can save to the server by pressing the [Save] button or [Ctrl-S]



## Tips & Tricks

Two new shortcuts have been added to Data Entry:

[Ctrl-Home] in the Editor takes you back to the beginning of your form, whichever type of form you are entering

[Ctrl-R] returns to the previous patient and item you were modifying. (Useful if interrupted during data entry. Works in Data Entry Editor; Index and Overview)

The full list of shortcuts is displayed by pressing [Ctrl-0]

## Patients from other centres

It is usual to see patients from other centres in your data entry index. This happens if a patient has had their first transplant at a different hospital. In order to follow up the patient they must keep their original UIC (Unique Identification Code) assigned in the EBMT database. If you see UICs beginning with a different centre code (3 digit CIC code) given by the EBMT, we kindly ask you to check with the London office first if there are any doubts. Please do not delete these data from your Promise database.

If you have any patients that had a previous transplant elsewhere, we would like to remind centres to complete the form on:

<http://www.ebmt.org/4Registry/registry4.html#prior>

before registering the subsequent transplant.

(UK centres can email details to [k.towilson@ucl.ac.uk](mailto:k.towilson@ucl.ac.uk))

## Always fill survival status

The field “Survival Status” is empty for some patients in the database. This is due to a lack of follow up after transplant, or an incomplete record.

This field is essential. Please check your data and provide a complete follow up or complete the field if a follow up is present. Instructions:

- In menu Filter – Record, load stored query “RF data check 009”
- Go to Data Entry – Index
- Open the “Build/Search for” menu and “Search by Record Filter”

The resulting list of entries represents those patients that need corrections.

## Helpdesk Holiday



Due to summer holidays the ProMISe helpdesk will be closed from **5 – 12 August 2005** inclusive. The database will still be available during this period, however we will be unable to provide user support. We apologise for any inconvenience caused.